

**PROFESSIONAL  
CONFIDENT  
RELIABLE**



**CMB**  
CLASSIFICATION SOCIETY



[www.cmb.or.kr](http://www.cmb.or.kr)

## ❖ INTRODUCTION

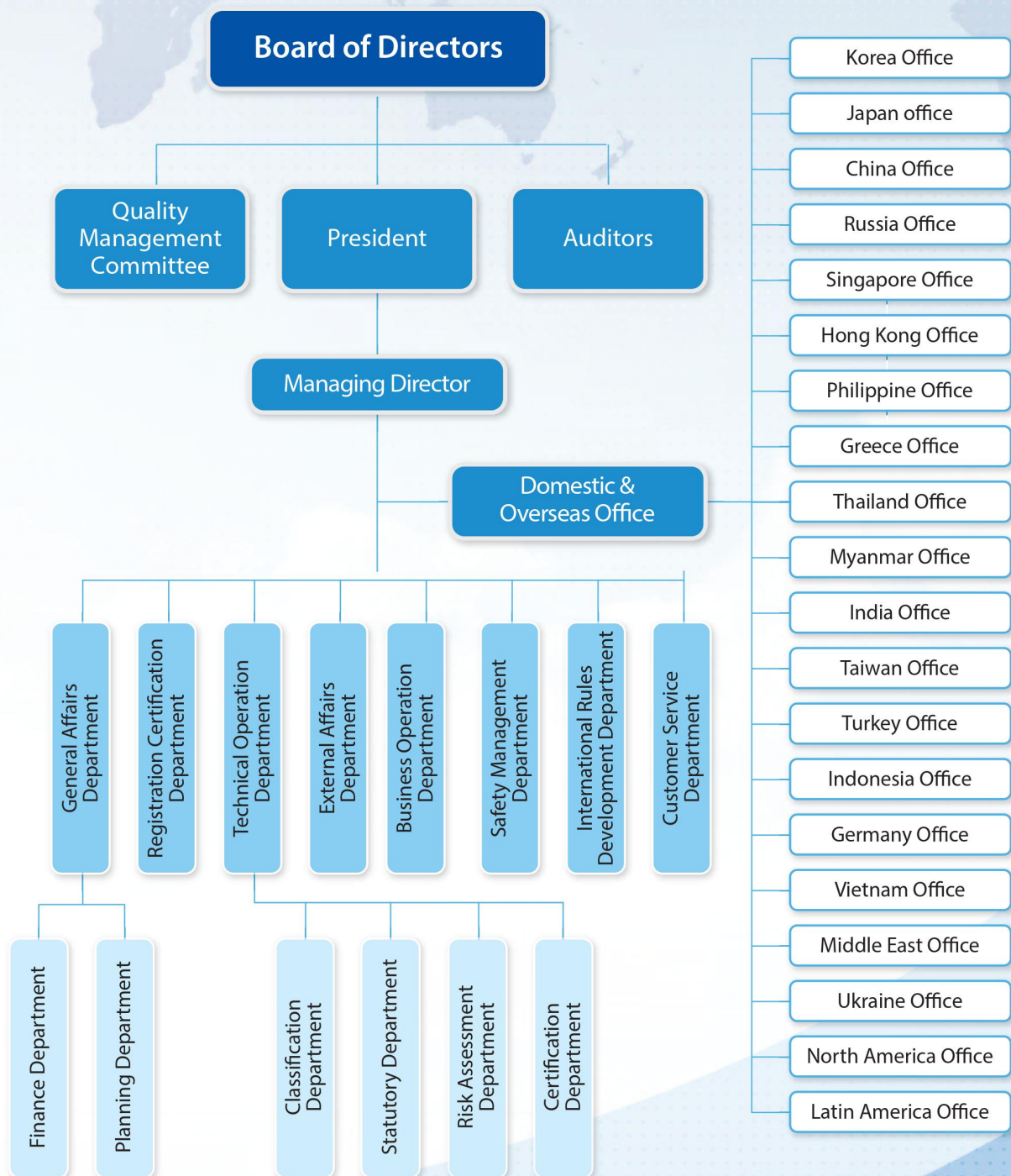
As a professional technical company equipped with highly qualified technicians and the scientific management system, has been granted due authorizations for the ship's statutory surveys/audits and certifications under a variety of flags which proves objectively our abundant, skillful know-how and intensive competitiveness in this shipping area. Particularly, as regards the statutory & classification surveys of the vessel and its certification, **COSMOS MARINE BUREAU INC. (CMB)** has, as one of the very best entity, especially recognized by the distinguished renown from many countries in the world, confidence in its original way of specialized ship inspection and effective managing.

Completely equipped with excellent knowledge and specialized experiences enabling to exhaustively provide all of you with a variety of shipping services in satisfaction, CMB would like to pride ourselves on the accomplishments in diversity such as great range of functions and capacities of shipowner, total ship manager, manning company, international shipping agency, international ship registries, recognized organization for various flags and classification society, etc., and all the more, in the future, with New Frontier's Spirit, being resolutely determined to advance own way continuously, always stand-by on alert to gratify Customer's Needs to the maximum with constant readiness, particularly through further widening our line of shipping services to the most and ensuring all of clients to be returned the best profits.

Taking this precious and valuable opportunity, from the bottom of our hearts, CMB would like to express our sincere appreciations to all of you for such positive attentions and cooperation devoted in every way till now, and in order to be the more reliable and credible total shipping service provider in top level over the world, both in name and reality, will promise to devote all our energies and strength on and on unchangingly, standing on firm maintenance of trustworthy relationship with customers, enabling you to truly enjoy more professional and advanced worldwide shipping services by CMB.



## ORGANIZATION & WORLDWIDE NETWORK

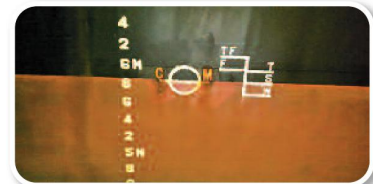


## :: FRESH PREPAREDNESS

- ❖ CMB, as a professional technical company equipped with highly qualified technicians and the scientific management system, has been granted due authorizations for the ship's statutory surveys/audits and certifications for a variety of flags for decades which proves objectively our abundant, skillful know-how and intensive competitiveness in this shipping area.
- ❖ In order to aim at taking the lead with progressive enterprise vision fit for the 21st century boundless competition under rapidly changing marine circumstances, CMB has perfectly made preparations for the advanced construction, and always ready to serve your diverse needs for ship's surveys and certifications for which CMB is available around the clock to answer your call and expert services produced by CMB will definitely make yourself quite content with the best choice.
- ❖ With a view to contribution to ensure the safety of human lives and vessels and to the prevention of marine pollution, CMB, as one of the best qualified ship's survey organization with skillful and well-trained personnel and with worldwide networks, has performed kinds of the ship's inspection and certification of materials, equipment and machinery intended to use on ships and offshore installations in respect to both new building and in service.
- ❖ Before everything else, we have carried out, for a long time, the duties for safety operation and maintenance, periodical survey and occasional survey for damages or recommendation, and for the issuance of classification and statutory certificates in connection with surveys performed for ships and units which are registered under a variety of flags.

## :: FUNCTION

- Ship Registration of Foreign Flags
- Statutory Surveys & Certifications
- ISM Code Audit & Certification
- ISPS Code Audit & Certification
- MLC Inspection & Certification
- Class Survey & Certification
- Flag State Inspection
- Pre-purchase Survey
- Crew Certification
- Offshore Incorporation Services
- Insurance Arrangements
- Marine Consultancy
- Consult to International Maritime Conventions





## :: STATUTORY CERTIFICATION

❖ CMB has gone through years of experiences for decades in this field so far and our public reputation highly gained during the period enabled CMB to be additionally granted the authorization to conduct the ship's statutory surveys and certifications in accordance with various kinds of the International Conventions and National Rules and Regulations.

❖ Service of Statutory Certifications to be provided by CMB are as follows :

- International Tonnage Certificate
- National Tonnage Certificate
- International Cargo Ship Safety Construction Certificate
- International Cargo Ship Safety Equipment Certificate
- International Cargo Ship Safety Radio Certificate
- International Load Line Certificate
- International Oil Pollution Prevention Certificate
- Cargo Ship Safety Certificate (Under 500 GRT)
- Cargo Ship Safety Radiotelephony Certificate (Under 300 RT)
- Fishing Vessel Safety Certificate
- Pleasure Craft Safety Certificate
- Passenger Ship Safety Certificate
- Seaworthiness Certificate
- International Certificate of Fitness for the Carriage of Dangerous Chemicals in Bulk
- Certificate of Fitness for the Carriage of Dangerous Chemicals in Bulk
- Certificate of Fitness for the Carriage of Liquefied Gases in Bulk
- International Certificate of Fitness for Carriage of Liquefied Gases in Bulk
- International Pollution Prevention Certificate for the Carriage of Noxious Liquid Substances in Bulk
- Certificate of Fitness for the Carriage of Solid Bulk Cargoes
- International Sewage Pollution Prevention Certificate
- International Garbage Certificate
- Document of Compliance
- Safety Management Certificate
- International Ship Security Certificate
- International Maritime Labor Certificate

## :: CLASSIFICATION SERVICES

At this stage, developing a wide array of services and reasonable tools for the ship's surveys and certifications to meet your business needs of any kind, inclusive of ISO Certification, and fully recognizing that the number of authorizations from the flag administrations would be a main standard to evaluate its faculty

and competence as the specialized surveys body and classification society, we, all members of CMB will exert ourselves to the utmost, anywhere and anytime, to gratify your request in every aspect, standing for **"Customer First"** as a policy.

❖ Service for Classification Society

Particularly, CMB is also in function of the classification society duly recognized by a variety of flags and furthermore, we can provide service for any open registry flags for classification society by our CMB organization.

❖ Entry procedures to CMB Classification & Measurements/Documents required for Classification Survey

- Anchor Chain with chain locker internal survey - measurement report required.
- Shell plate - thickness measurement report required.
- Sea Chest - docking report required.
- Sea valve / Overboard valve - docking report required.
- Propeller & Propeller shaft
- Rudder
- Tanks : Peak, W.B.T. , Deep Tank, Rudder Trunk - if applicable, the report required.
- Main switchboard, Electric distribution, circuit and cable - megger test required.
- Main Engine
- Aux. Engine - Overhaul measurement report required.
- Others : If requested by surveyor

❖ All record / report are available to be submitted to our organization as previous records in case of transfer of Class

❖ Stability information & Other documents

- Copy of previous Classification certificate (if applicable).
- Copy of the report of previous Classification (if applicable).

❖ According to CMB procedure, the initial survey is available to be carried out any case at dry-dock or afloat and where the initial survey is carried out to the extent of special survey, the classification certificate will be assigned for a period of 5 years, starting from the date of issue of the interim certification of class.

## ❖ QUALITY POLICIES

Since obtaining Initial Certification for the Quality Assurance System in 1996, CMB, under the requirements for ISO 9001:2008 Certification, has recently completed the CONVENTION ASSESSMENT as required in success for ISO 9002:1994 that has been maintained in effect so far and has been consequently awarded the ISO 9001:2008 Certification in recognition of the organization's Quality System which complies with ISO 9001:2008 by United Registrar of Systems Ltd. (URS) of the Certification Body as changed which was duly registered under the Accreditation Body of UKAS at the same time, the scope of activities covered by whose Quality Management System is defined Ship's Statutory Services(Surveys/Certifica-



tions/Approvals) and ISM, ISPS & MLC Audits and Certifications.

Further, in order to become the primary preferred classification and certification organization that powered by its own generated knowledge and rules as well as to provide service to make conformity assessments in life, property and environment related fields under direction of our code of ethics, CMB has particularly established our basic policies below to be intended for substantial realization of needs.

❖ Quality Policies of CMB are as follows ;

- TO ENSURE the Safety of Life, Property and Environmental Protection in due compliance with the International Conventions and National Legislations.
- TO ENSURE further enhancement of the quality of registered ships and continuous effective control to keep the standards.
- TO ENSURE continuous endeavors to provide all customers with best, professional and qualified services with impartiality, confidentiality and reliability.
- TO ENSURE to take necessary measures in advance against potential matters with a view to prevention and/or minimization of deficiencies (if any), relating to Ship's Safety, Security and Environmental Protection.
- TO ENSURE continual improvement of the Quality Management System based on objective measurement through understanding and meeting requirements as well as monitoring on process performance and effectiveness.

## ❖ PROSPECT

Constant and persevering efforts have always been made in order to improve the quality of our service for the benefit of our clients. To render our services of even better quality the following are the objectives we should direct continuous efforts to.

- To raise the technical standard for our surveyors and supporting staff by means of well-planned training programs.
- To modernize “CMB Rules for Classification of Steel Ships” and other related rules in order to cope with the demands of the shipping industry, marine insurance companies, etc. for a higher quality standard in respect of surveys and tests by doing more thorough researches and collecting relevant information more comprehensively.
- To keep us well informed of the publications relating to international conventions and advanced technology and expertise connected with our services.
- To maintain an internal auditing system for strengthening and unifying management procedure.
- To strive for fully computerized management so as to better serve our clients.
- To provide our services in those foreign ports where we are not yet represented by where there is such a need by establishing more non-exclusive surveyor's office.
- To expand and extend our consulting services so as to help shipowners and those in need of such services to solve their technical problems.



## COSMOS MARINE BUREAU INC.

4TH Floor, Room #403 (Centum IS TOWER), 60,  
Centum buk-daero, Haeundae-gu, Busan, Korea (Zip Code. 48059)  
Telephone. +82-51-466-4549 Facsimile. +82-51-467-2522  
E-mail. [cmb@cmb.or.kr](mailto:cmb@cmb.or.kr) / [cmbmarinesurvey@gmail.com](mailto:cmbmarinesurvey@gmail.com)  
Web page : [www.cmb.or.kr](http://www.cmb.or.kr)